



KONICA MINOLTA

The essentials of imaging



OFFERING  
THE SKILLS  
TO WIN

# **bizhub C452/C552/C652**

Simply convincing

Office systems bizhub C452/C552/C652



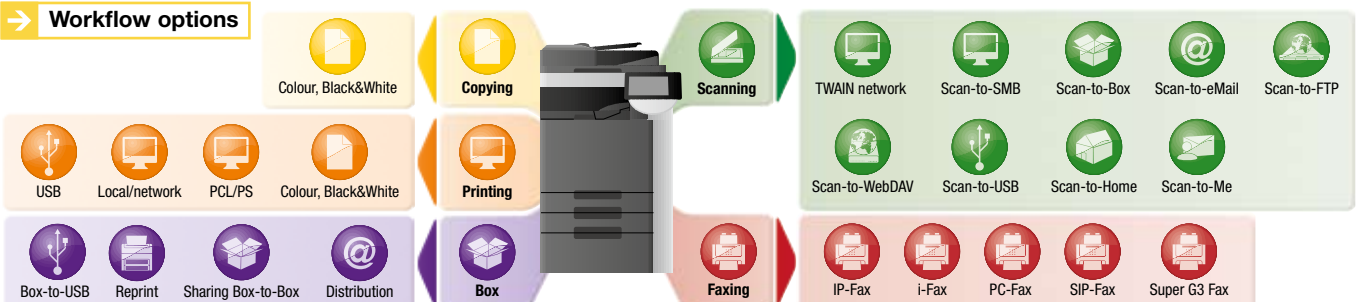
# Convincing values inside and out

To stay ahead, large workgroups and busy departments as well as CRDs continuously need to upgrade and enhance their document production and communication facilities. For that purpose Konica Minolta's colour multifunctionals bizhub C452, C552 and C652 combine advanced technology, amazing versatility and absolute reliability with an attractive, futuristic InfoLine design.

- A convincing performance is the key to productivity - and the bizhub C452/C552/C652 boasts an array of high performance features:
  - Their 1GHz CPU provides a truly amazing processing speed and guarantees impressive computing power.
  - With 2GB memory, both systems are generously equipped with the fastest and most innovative memory presently available.
  - With a 250GB HDD, the bizhub C452/C552/C652 features a sizable and ultra-fast hard disc.

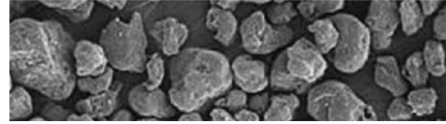
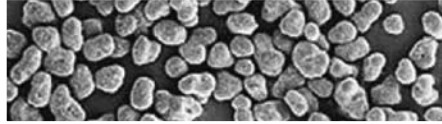
- A convincing design turns any equipment into the highlight of the corporate office or print room. The bizhub C452/C552/C652's futuristic **InfoLine design** does more than that - its intuitive operation considerably improves user convenience and operability.
- The bizhub C452, C552 and C652 convince with Konica Minolta's "**skills to win**": they combine comprehensive communication capabilities in a single device, feature latest technology and advanced software applications, provide above-their-class colour and b/w quality and are entirely eco-friendly.

## → Workflow options



Simitri® HD polymerised toner

Conventional toner



# Technology & quality, absolutely convincing

## → Advanced Emperon™ controller

Konica Minolta's proprietary Emperon™ print controller is an integral part of the bizhub C452/C552/C652's overall system architecture and ensures seamless integration into any standard network environment, offering maximum compatibility with standard **PCL, PostScript 3, PDF and XPS** support. In addition to its **PDF 1.7** capability it features numerous quality enhancements, including auto-trapping and black overprint. With **PPML** (Personalized Print Markup Language), the Emperon™ ensures higher printing performance and throughput for Variable Data Printing, such as personalised mailings and advertising materials. Ease of operation has been improved with the introduction of a customised printer driver tab: under **MyTab** users can individually combine their frequently used features enabling them to make all settings in a single screen.



## → Unique Simitri® HD toner

With tiny and uniformly shaped toner particles Konica Minolta's proprietary Simitri® HD polymerised toner achieves an image quality second to none. Razor-sharp text and lines, colours that don't fade and a smooth and highly durable print finish ensure longer-lasting prints of better quality than ever – perfect for professional materials like mailings and leaflets, the print surface doesn't break or peel on folded pages.

merised toner enables fixing at lower temperatures, for which induction heating provides an accurate and instantaneous source of heat. This minimises the warm-up time to a revolutionary 45 seconds while maximising energy efficiency<sup>1</sup>.

## → Impressive eco-performance

Complying with the regulations of the **Energy Star, German Blue Angel, \*WEEE and \*\*RoHs**, the bizhub C452/C552/C652 impress with the lowest energy consumption values yet achieved in products of their class. Their combination of **low power and sleep mode** with an individually programmable timer ensures optimal power control. At the same time, Simitri® HD poly-

Pursuing an **ISO 14001**-based environmental management system, Konica Minolta promotes resource-friendly product development and with its zero waste manufacturing concept, strives to **minimise the ecological impact** of its products with efficient environmental activities throughout all stages of the product lifecycle. For this purpose, the environmental impact is assessed at each stage in a product's life: from raw materials and parts procurement to manufacture, transportation, sale, reuse and disposal.

## → Configurations



**bizhub C452** 

**bizhub C552** 

**bizhub C652** 



# Complete multifunctionality, **convincing versatility**

## → User convenience and operability

The bizhub C452/C552/C652's large full-colour touch screen display can be tilted and turned to guarantee excellent visibility from any angle. Enhanced colour preview and **thumbnail features** allowing you to check exactly what the printed document will look like, avoiding mistakes before production. The logical screen layout, the **animated help** and guidance features as well as an optional hardware keyboard further support the simple and straight-forward operation.

## → Competent printing & copying

As productive printers and copiers, the bizhub C452/C552/ C652 offer enhanced multifunctionality for a powerful performance and focus on the fully automatic production of professional documents. These systems impress with **100% duplex productivity** and a versatile feature set for the creation of sophisticated print products. In colour as much as in black and white, they are highly flexible, economical and always ready to go.

## → Enhanced user box functionality

Opening up a new dimension in office communication, Konica Minolta's **unique User Box** approach makes the storing and managing of information on the systems' internal hard disc truly efficient and enables fast and convenient sharing or forwarding of scanned, printed, copied and faxed documents. Up to **1,000 user boxes** can be set up with flexible access rights and boxes defined as public, for group use or private. Especially convenient is the direct Box to USB capability that lets users transfer documents from their box to a USB stick and vice versa. This open system enables users to take advantage of the bizhub's multifunctional communication capabilities without requiring a PC.



## → High-speed scanning & faxing

Similarly productive as scanners, the bizhub C452, C552 and C652 streamline the simple distribution and sharing of information. With an impressive **78 opm** they offer scan to eMail, FTP, SMB and user box, making them the ideal input tools for professional document archiving and integration into Document Management Systems. The clever **scan-to-USB** feature gives user flexibility an attractive boost, enabling time-saving direct scanning from the bizhub to the USB stick without the detour via the PC.

The choice of scan formats includes **JPEG and multi-page PDF, XPS and TIFF** as well as **compact PDF and compact XPS**, which with their considerably reduced file sizes help to ease network traffic and speed up communication.

Available in combination with user authentication, the functions **scan-to-Me** and **scan-to-Home** serve to speed up the process of sending scans to the user's own e-mail address (scan-to-Me) or own registered PC folder (scan-to-Home). The administrator can take advantage of these features to restrict the choice of scan destinations to a user's own destinations.

To any location requiring fax communication, the bizhub C452/C552/C652 offer generous digital and analogue fax capabilities, including Internet Fax and **IP (Intranet) Fax in colour**. Various security features make confidential fax communication reliably safe.

## → Comprehensive media capabilities

Media processing on the bizhub C452/C552/C652 is impressively flexible: their generous paper supply of **up to 6,650 sheets** is sufficient to complete even high-volume jobs without interruption. Paper sizes range from **A6 to A3+** and paper qualities include thick paper of up to **300 gsm**. Special media are processed without a hitch, as with customised sizes, including banner printing on individual sheets of up to **1.2 metres** in length.

## → Finishing versatility

The bizhub C452, C552 and C652 can be equipped with versatile finishing options. A highlight in the bizhub C552/C652's booklet finisher is the **endless booklet production**. This finisher also provides a letter-fold functionality, equally with endless capacity and perfect for the time-saving automatic folding of invoices, mailings and other letters. The finishing versatility further includes automatic stapling of up to **100 sheets, 2- and 4-hole** punching for professional manuals, reports and extensive documentation; the insertion of preprinted covers of up to 209 gsm via the optional post inserter and a z-fold unit for automatic folding to size of A3 charts and tables.

The bizhub C452 can be enhanced with its own floor-type finisher that impresses with its **modular concept** and offers attractive user flexibility. In addition to multi-position stapling of manuals, reports and other comprehensive documentation, punching can be equipped, ideal for example for meeting minutes. The inline booklet feature provides the fully automatic production of centre-folded and saddle-stitched brochures and booklets.





# Convincing administration, **streamlined workflows**

## → Convenient PageScope utilities

The standard PageScope Suite provides comprehensive account and data management, efficient **device monitoring** and satisfies important administrator demands: the PageScope Data Administrator facilitates the integration of new equipment into existing workflows as well as the programming of **user authentication** data, helping to cut costs and control output volumes. The practical **Print Status Notifier** keeps users informed of the device status and progress of their jobs with automatic pop-up messages on the PC screen. Users can concentrate on other tasks and save time, as there's no need to keep checking the printer. The **PageScope Box Operator** provides convenient direct access from the PC to documents stored in user boxes and with multi-file preview enables fast searches via thumbnails.

## → PageScope Enterprise Suite

This enhanced software suite gives administrators a full monitoring and management application that provides complete access to all user- and device-related information from a central server platform. The modules can be integrated individually or in combination for maximised benefits:

- The standard **PageScope NetCare Device Manager** facilitates the central implementation of system network configurations and central status monitoring. The application provides fast access to and simple monitoring of individual or all devices on the network, helping to maximise the uptime of all monitored equipment.
- The **PageScope Authentication Manager** enables central management of the user database and user rights.
- The **PageScope Account Manager** provides the convenient central collection of detailed counter readings and the ensuing cost calculation.
- The **PageScope MyPanel Manager** makes the individual creation of central user profiles, personalised address books and scan destinations fast, straightforward and convenient.



## → bEST technologies

With the bizhub Extended Solution Technology (bEST) the bizhub C452/C552/C652 can be adapted to close the gap to customer environments. Document **archiving workflows** can for example be started **directly at the bizhub panel**, inputting all required information like document type and additional index fields during the scan process so that post-treatment of the scans in the PC becomes obsolete.

bEST can make life easier also for copying and printing. After authentication at the output device bEST OpenAPI is used to give permission to each function based on each user's specific access rights. Via the user ID it is possible to manage all personal print jobs directly at the bizhub panel. Bringing user experience to the next level, the design of the panel can be completely customised, using i-Option and bEST OpenAPI in conjunction with each other.

## → i-Option

The clever software enhancements of i-Option increase convenience and streamline user operation of the bizhub C452/C552/C652, also enabling safe communication with PDFs. The i-Option **Web Browser** provides direct panel access to information and documents on the Internet. It makes browsing the web from the MFP's control panel just as convenient as direct printing of web pages or linked PDF and XPS files.

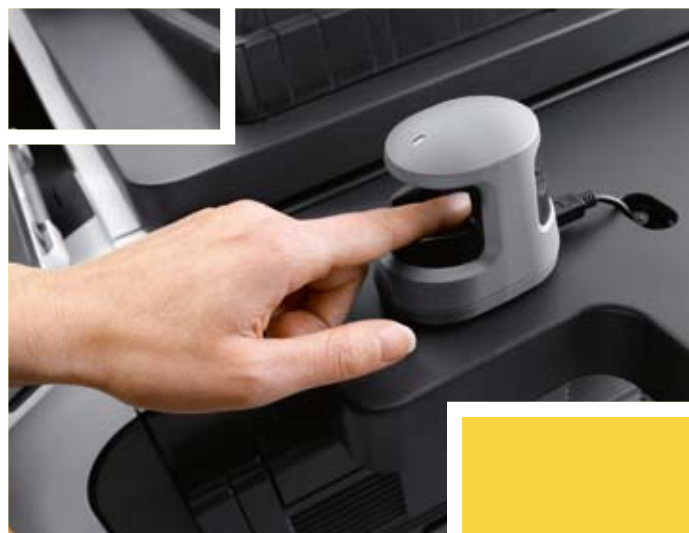
**Digital ID encryption** and **digital signature** protect PDF files against tampering and improper use. i-Option enables the processing of scanned data with OCR to create **searchable PDF** documents. These include a full-text search capability as well as the convenience of being able to copy text from the PDF into other documents or applications.

## → Impressive security standards

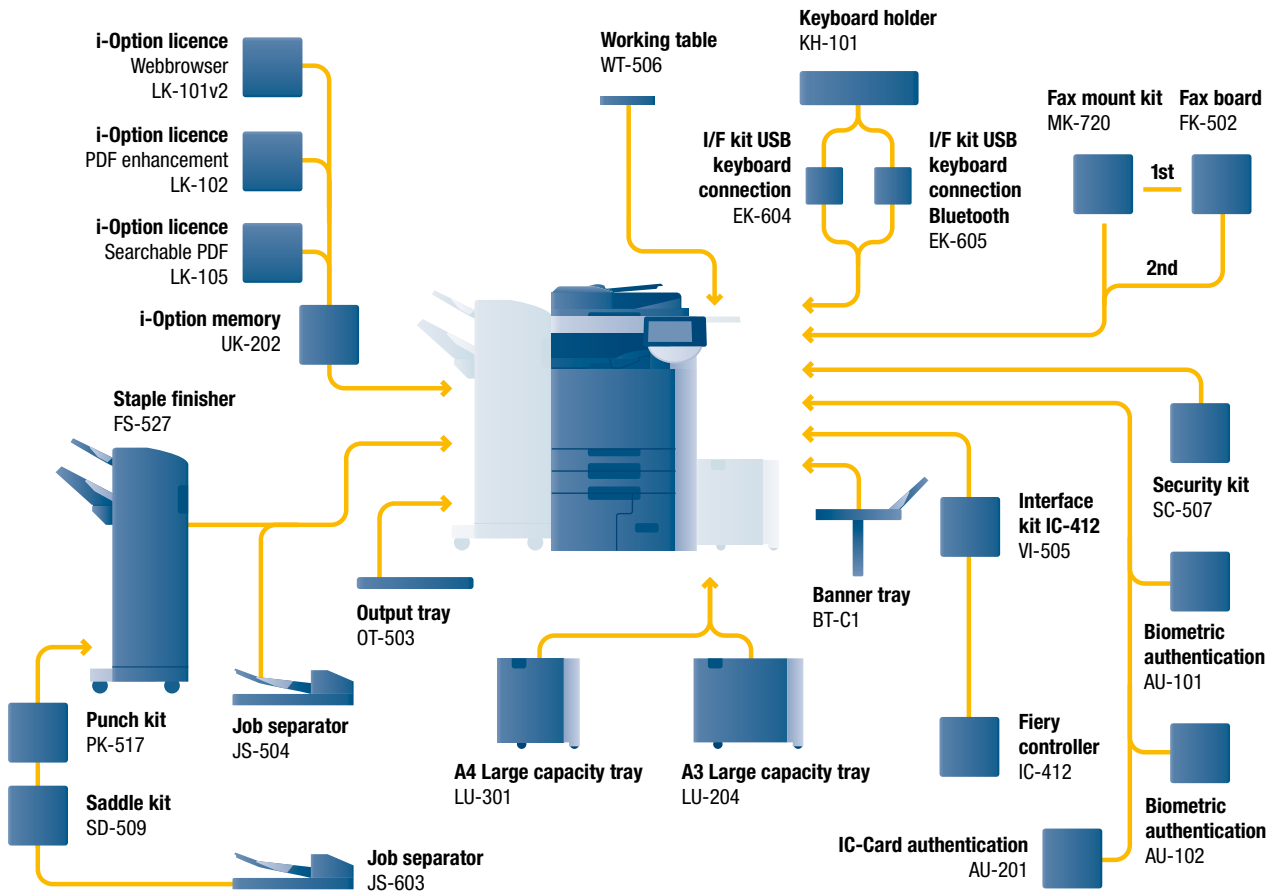
In addition to Konica Minolta's comprehensive standard security features, the bizhub C452/C552/C652 include advanced security functionality and are of course certified to **ISO 15408 EAL3**.

With client authentication via **IEEE 802.1x**, the systems can be connected to secure networks. Safe network communication from and to these devices is ensured by encryption with the **IPsec** protocol. The **standard HDD encryption** kit protects all data on the hard disk against unauthorised use. Authentication via optional **finger vein scanner** or non-contact ID card limits system access to authorised users and has been improved in convenience and usability.

Enhanced security against unauthorised copying is also available with the **Copy Guard** option. When this is activated it ensures that an original will not be copied at all because the MFP detects a special protection pattern, while Password Copy enables copying of the protected original only if the correct password is entered.



➔ Option diagram & descriptions bizhub C452



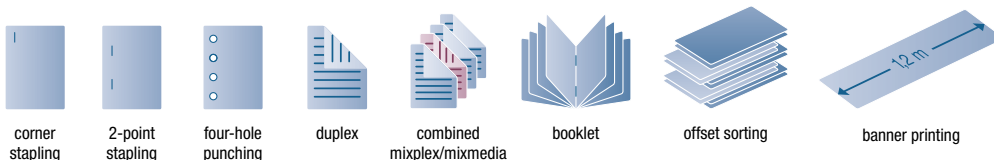
**bizhub C452**  
Basic system

Communication centre with 45/45 ppm b/w and colour. Standard Emperon™ print controller with PCL 6c, PostScript 3, PDF 1.7 and XPS support. Paper capacity of 500 + 500 + 1,000 + 1,500 sheets and 150 sheets manual bypass. Media from A6 to A3+, 1.2 m banner and 64–300 gsm. 2 GB memory, 250 GB hard disc and 1 GB Ethernet standard.

<b>FS-527 Staple finisher</b>	50 sheet stapling, output capacity 3,200 sheets
<b>PK-517 Punch kit</b>	4 hole punching
<b>SD-509 Saddle kit</b>	Booklet finishing
<b>JS-603 Job separator</b>	Job separator e.g. for fax output
<b>JS-504 Job separator</b>	Job separator e.g. for fax output
<b>OT-503 Output tray</b>	Output tray used instead of finisher
<b>LU-301 Large capacity tray</b>	A4, 3,000 sheets, 64–256 gsm
<b>LU-204 Large capacity tray</b>	A4–A3+, 2,500 sheets, 64–256 gsm
<b>BT-C1 Banner tray</b>	Multipage banner printing
<b>VI-505 Interface kit</b>	Fiery controller interface card
<b>IC-412 Fiery controller</b>	Professional colour print controller

<b>AU-101 Biometric authentication (basic)</b>	Finger vein scanner
<b>AU-102 Biometric authentication (advanced)</b>	Finger vein scanner
<b>AU-201 IC-Card authentication</b>	IC-Card scanner
<b>SC-507 Security kit</b>	Copy Guard function
<b>KH-101 Keyboard holder</b>	To place the USB keyboard
<b>EK-604 I/F kit</b>	USB keyboard connection
<b>EK-605 I/F kit</b>	USB keyboard connection Bluetooth
<b>MK-720 Fax mount kit</b>	I/F board for fax FK-502
<b>FK-502 Fax board</b>	Super G3 fax
<b>WT-506 Working table</b>	Authentication device placement
<b>LK-101v2 i-Option licence</b>	Webbrowser, Image panel
<b>LK-102 i-Option licence</b>	PDF enhancement
<b>LK-105 i-Option licence</b>	Searchable PDF
<b>UK-202 i-Option memory</b>	Memory extension for i-Option

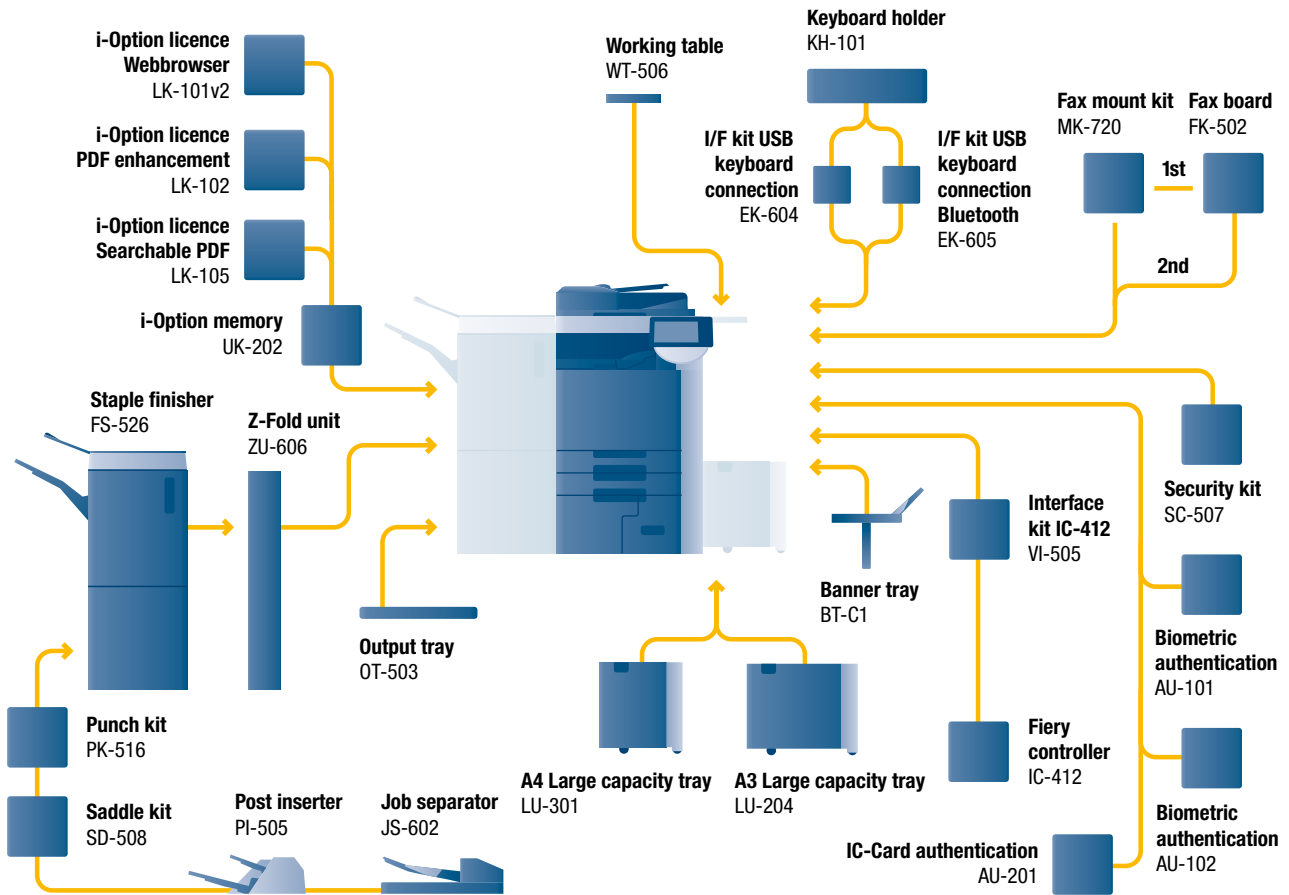
➔ Finishing options bizhub C452



corner stapling    2-point stapling    four-hole punching    duplex    combined mixplex/mixmedia    booklet    offset sorting    banner printing



➔ Option diagram & descriptions bizhub C552 and bizhub C652



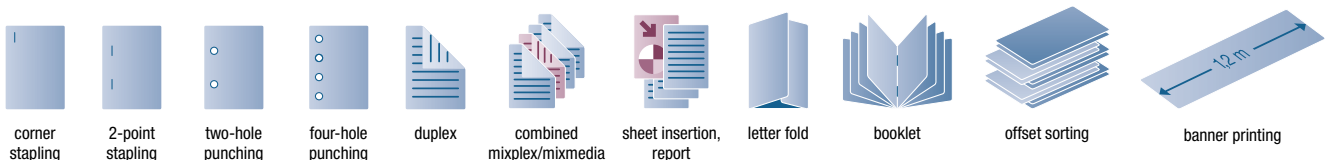
**bizhub C552/C652 Basic system**

Communication centres with 55/65 ppm b/w and 45/50 ppm colour. Standard Emperon™ print controller with PCL 6c, PostScript 3, PDF 1.7 and XPS support. Paper capacity of 500 + 500 + 1,000 + 1,500 sheets and 150 sheets manual bypass. Media from A6 to A3+, 1.2 m banner and 64–300 gsm. 2 GB memory, 250 GB hard disc and 1 GB Ethernet standard.

<b>FS-526 Staple finisher</b>	100 sheet stapling, output capacity 3,100 sheets
<b>PK-516 Punch kit</b>	2/4 hole punching
<b>SD-508 Saddle kit</b>	Booklet finishing, letter-folding
<b>JS-602 Job separator</b>	Job separator e.g. for fax output
<b>PI-505 Post inserter</b>	Cover insertion, post finishing
<b>ZU-606 Z-Fold unit</b>	Z-fold for A4 and A3
<b>OT-503 Output tray</b>	Output tray used instead of finisher
<b>LU-301 Large capacity tray</b>	A4, 3,000 sheets, 64–256 gsm
<b>LU-204 Large capacity tray</b>	A4–A3+, 2,500 sheets, 64–256 gsm
<b>BT-C1 Banner tray</b>	Multipage banner printing
<b>VI-505 Interface kit</b>	Fiery controller interface card

<b>IC-412 Fiery controller</b>	Professional colour print controller
<b>AU-101 Biometric authentication (basic)</b>	Finger vein scanner
<b>AU-102 Biometric authentication (advanced)</b>	Finger vein scanner
<b>AU-201 IC-Card authentication</b>	IC-Card scanner
<b>SC-507 Security kit</b>	Copy Guard function
<b>KH-101 Keyboard holder</b>	To place the USB keyboard
<b>EK-604 I/F kit</b>	USB keyboard connection
<b>EK-605 I/F kit</b>	USB keyboard connection Bluetooth
<b>MK-720 Fax mount kit</b>	I/F board for fax FK-502
<b>FK-502 Fax board</b>	Super G3 fax
<b>WT-506 Working table</b>	Authentication device placement
<b>LK-101v2 i-Option licence</b>	Webbrowser, Image panel
<b>LK-102 i-Option licence</b>	PDF enhancement
<b>LK-105 i-Option licence</b>	Searchable PDF
<b>UK-202 i-Option memory</b>	Memory extension for i-Option

➔ Finishing options bizhub C552 and bizhub C652



## ➔ Technical specifications bizhub C452/C552/C652

### ■ Copier specifications

<b>Copying process</b>	Electrostatic laser copy Tandem indirect
<b>Toner system</b>	Simitri HD®- polymerised toner
<b>Copy/print speed A4 (mono/colour)</b>	Up to 45/45 cpm (bizhub C452) Up to 55/45 cpm (bizhub C552) Up to 65/50 cpm (bizhub C652)
<b>Copy/print speed A3 (mono/colour)</b>	Up to 23/23 cpm (bizhub C452) Up to 28/23 cpm (bizhub C552) Up to 33/25 cpm (bizhub C652)
<b>Autoduplex speed A4 (mono/colour)</b>	Up to 45/45 cpm (bizhub C452) Up to 55/45 cpm (bizhub C552) Up to 65/50 cpm (bizhub C652)
<b>1st copy/print time (mono/colour)</b>	4.8/6.0 sec. (bizhub C452) 4.3/6.0 sec. (bizhub C552) 3.8/5.5 sec. (bizhub C652)
<b>Warm-up time</b>	Approx. 45 sec. <sup>1</sup>
<b>Copy resolution</b>	600 x 600 dpi
<b>Gradation</b>	256 gradations
<b>Multi-copy</b>	1–9,999
<b>Original format</b>	A5–A3
<b>Magnification</b>	25–400% in 0.1% steps; Autozooming
<b>Copy functions</b>	Chapter Cover and page insertion Proof copy (print and screen) Adjustment test print Digital art functions Job setting memory Poster mode; Image repeat Overlay Stamping

### ■ Printer specifications (Embedded Emperon Controller)

<b>Print resolution</b>	Equivalent to 1,800 x 600 dpi
<b>Controller CPU</b>	PowerPC MC7448 @ 1 GHz; 64 BIT
<b>Page description language</b>	PCL 6c PostScript 3 (CPSI 3017) XPS
<b>Operating systems</b>	Windows 2000 Windows XP Windows XP64 Windows VISTA 32 Windows VISTA 64 (DPWS support) Windows Server 2000 Windows Server 2003 Windows Server 2003x64 Windows Server 2008 Windows Server 2008x64 Macintosh 9.x Macintosh 10.x Unix Linux Citrix
<b>Printer fonts</b>	80x PCL 137x PostScript 3 Emulation
<b>Print functions</b>	Direct print of PCL Direct print of PS Direct print of TIFF Direct print of XPS Direct print of PDF and Encrypted PDF files Mixmedia and mixplex Job programming "Easy Set" Overlay Watermark

### ■ Scanner specifications

<b>Scan speed</b>	Colour up to 78 opm (300 dpi via DF) Mono up to 78 opm (300 dpi via DF)
<b>Scan resolution</b>	Max.: 600 x 600 dpi
<b>Scan modes</b>	Network TWAIN scan Scan-to-eMail (scan-to-Me) Scan-to-FTP Scan-to-SMB (scan-to-Home) Scan-to-Box Scan-to-WebDAV Scan-to-DPWS Scan-to-USB
<b>File formats</b>	JPEG TIFF PDF Compact PDF Encrypted PDF XPS Compact XPS
<b>Scan destinations</b>	2,100 (single + group); LDAP support
<b>Scan functions</b>	Annotation (text/time/date) for PDF; up to 400 job programs

### ■ Fax specifications (optional)

<b>Fax standard</b>	Super G3 (optional)
<b>Fax transmission</b>	Analogue i-Fax Colour i-Fax (RFC3949-C) IP-Fax SIP-Fax
<b>Fax resolution</b>	Max.: 600 x 600 dpi (ultra-fine)
<b>Fax compression</b>	MH; MR; MMR; JBIG
<b>Fax modem</b>	Up to 33.6 Kbps
<b>Fax destinations</b>	2,100 (single + group)
<b>Fax functions</b>	Polling; Time shift; PC-Fax; Receipt to confidential box; Receipt to eMail/FTP/SMB; up to 400 job programs

### ■ User box specification

<b>Max. user boxes</b>	1,000
<b>Max. storable documents</b>	Up to 3,000 documents or 10,000 pages
<b>Type of user boxes</b>	Public Personal (with password or authentication) Group (with authentication)
<b>Type of system boxes</b>	Secure print Encrypted PDF print Fax receiving Fax polling
<b>User box functionality</b>	Reprint; combination Download Sending (email/FTP/SMB and Fax) Copy box to box

### ■ System Specifications

<b>System memory</b>	2 GB
<b>System hard disc</b>	250 GB
<b>Interface</b>	10-Base-T/100-Base-TX/1,000-Base-T Ethernet; USB 2.0
<b>Network protocols</b>	TCP/IP (IPv4 / IPv6); IPX/SPX; NetBEUI; AppleTalk (EtherTalk); SMB; LPD; IPP; SNMP; HTTP
<b>Frame types</b>	Ethernet 802.2; Ethernet 802.3; Ethernet II; Ethernet SNAP
<b>Automatic document feeder</b>	Up to 100 originals; A6–A3; 35–210 gsm
<b>Printable paper size</b>	A6–A3 full bleed; customised paper sizes; banner paper max. 1,200 x 297 mm
<b>Printable paper weight</b>	64–300 gsm
<b>Paper input capacity</b>	Standard: 3,650 sheets Max.: 6,650 sheets
<b>Tray 1 + 2</b>	500 sheets; A5–A3+; 64–256 gsm
<b>Tray 3</b>	1,500 sheets; A4; 64–256 gsm

<sup>1</sup> Warm up time may vary depending on the operating environment and usage



<b>Tray 4</b>	1,000 sheets; A4; 64–256 gsm
<b>Manual Bypass</b>	150 sheets; A6–A3+; custom sizes; banner 64–300 gsm
<b>A4 Large Capacity Tray (optional)</b>	3,000 sheets; A4; 64–256 gsm
<b>A4/A3 Large Capacity Tray (optional)</b>	2,500 sheets; A4–A3+; 64–256 gsm
<b>Automatic duplexing</b>	A5–A3+; 64–256 gsm
<b>Finishing modes (optional)</b>	Offset; group; sort; staple; punch; centre-fold; booklet (bizhub C452) Offset; group; sort; staple; punch; post insertion; z-fold; centre-fold; letter-fold; booklet (bizhub C552/C652)
<b>Output capacity (w. finisher)</b>	Max.: 3,200 sheets (bizhub C452)
<b>Output capacity (w/o finisher)</b>	Max.: 3,100 sheets (bizhub C552/C652)
<b>Stapling</b>	50 sheets or 48 sheets + 2 cover sheets (up to 209 gsm) (bizhub C452) 100 sheets or 98 sheets + 2 cover sheets (up to 209 gsm) (bizhub C552/C652)
<b>Stapling output capacity</b>	Max. 1,000 sheets
<b>Letterfold</b>	Up to 3 sheets (bizhub C552/C652 only)
<b>Booklet (optional)</b>	15 sheets or 14 sheets + 1 cover sheet (up to 209 gsm) (bizhub C452) 20 sheets or 19 sheets + 1 cover sheet (up to 209 gsm) (bizhub C552/C652)
<b>Booklet output capacity</b>	75 sheets (bizhub C452) unlimited (bizhub C552/C652)
<b>Power consumption</b>	220-240 V / 50/60Hz Less than 2.0 KW (bizhub C452/C552) Less than 2.1 KW (bizhub C652)
<b>System dimensions (W x D x H, mm)</b>	650 x 879 x 1155
<b>System weight</b>	Approx. 221 kg

#### ■ System features

<b>Security</b>	ISO 15408 EAL3 (in evaluation) IP filtering and port blocking SSL2; SSL3 and TSL1.0 network communication IPsec support IEEE 802.1x support User authentication Authentication log; Secure Print Hard disc overwrite (8 standard types) Hard disc data encryption (AES 256) Memory data auto deletion Confidential fax receiving Print user data encryption Copy Protection (copy guard, password)
<b>Accounting</b>	Up to 1,000 user accounts Active Directory support (user name + password + email + smb folder) User function access definition Biometric authentication (finger vein) optional IC-Card authentication (IC-Card reader) optional
<b>Software</b>	PageScope Net Care Device Manager PageScope Data Administrator PageScope Box Operator PageScope Direct Print Print Status Notifier Driver Packaging Utility Log Management Utility





KONICA MINOLTA

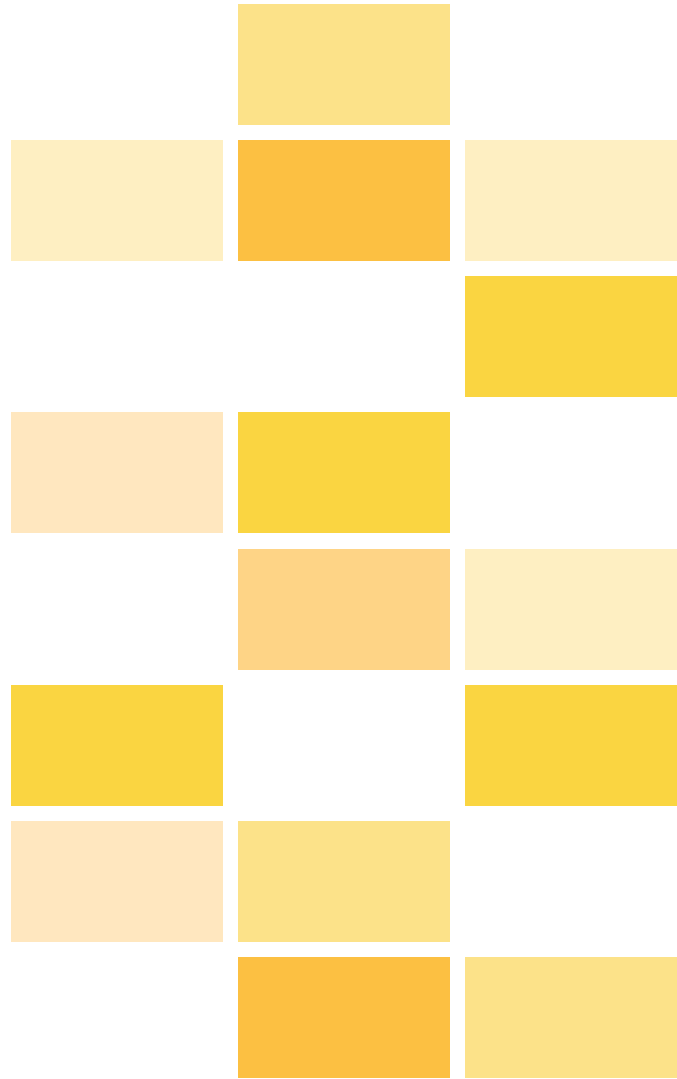
Simitri HD  
High Definition Polymerised Toner



CITRIX



SAP® Printer Vendor Solution



- All specifications relating to paper capacity refer to A4-size paper of 80 gsm quality
- All specifications relating to scanning, copying or printing speeds refer to A4-size paper that is scanned, copied or printed crosswise in multipage, simplex mode.
- The support and availability of the listed specifications and functionalities varies depending on operating systems, applications, network protocols as well as network and system configurations
- The stated life expectancy of each consumable is based on specific operating conditions such as page coverage for a particular page size (5 % coverage of A4). The actual consumables life will vary depending on the use and other printing variables including page coverage, page size, media type, continuous or intermittent printing, ambient temperature and humidity
- Some of the product illustrations contain optional accessories
- Specifications and accessories are based on the information available at the time of printing and are subject to change without notice
- Konica Minolta does not warrant that any prices or specifications mentioned will be error-free
- Microsoft, Windows and the Windows logo are trademarks, or registered trademarks, of Microsoft Corporation in the United States and/or other countries
- SAP and all SAP logos are trademarks or registered trademarks of SAP AG in Germany and in several other countries
- All other brand and product names may be registered trademarks or trademarks of their respective holders and are hereby acknowledged

\*WEEE = EU Directive on Waste and Electrical Equipment  
\*\*RoHS = Restriction of Hazardous Substances Directive

Printed in the UK on Aleo 80 Silk, a paper containing a minimum of 60% post consumer recycled fibre & 20% pre-consumer recycled fibre



When you have finished with this brochure please recycle it

80% recycled

This brochure is printed on 80% recycled paper



Your Konica Minolta Business Solutions Partner:

